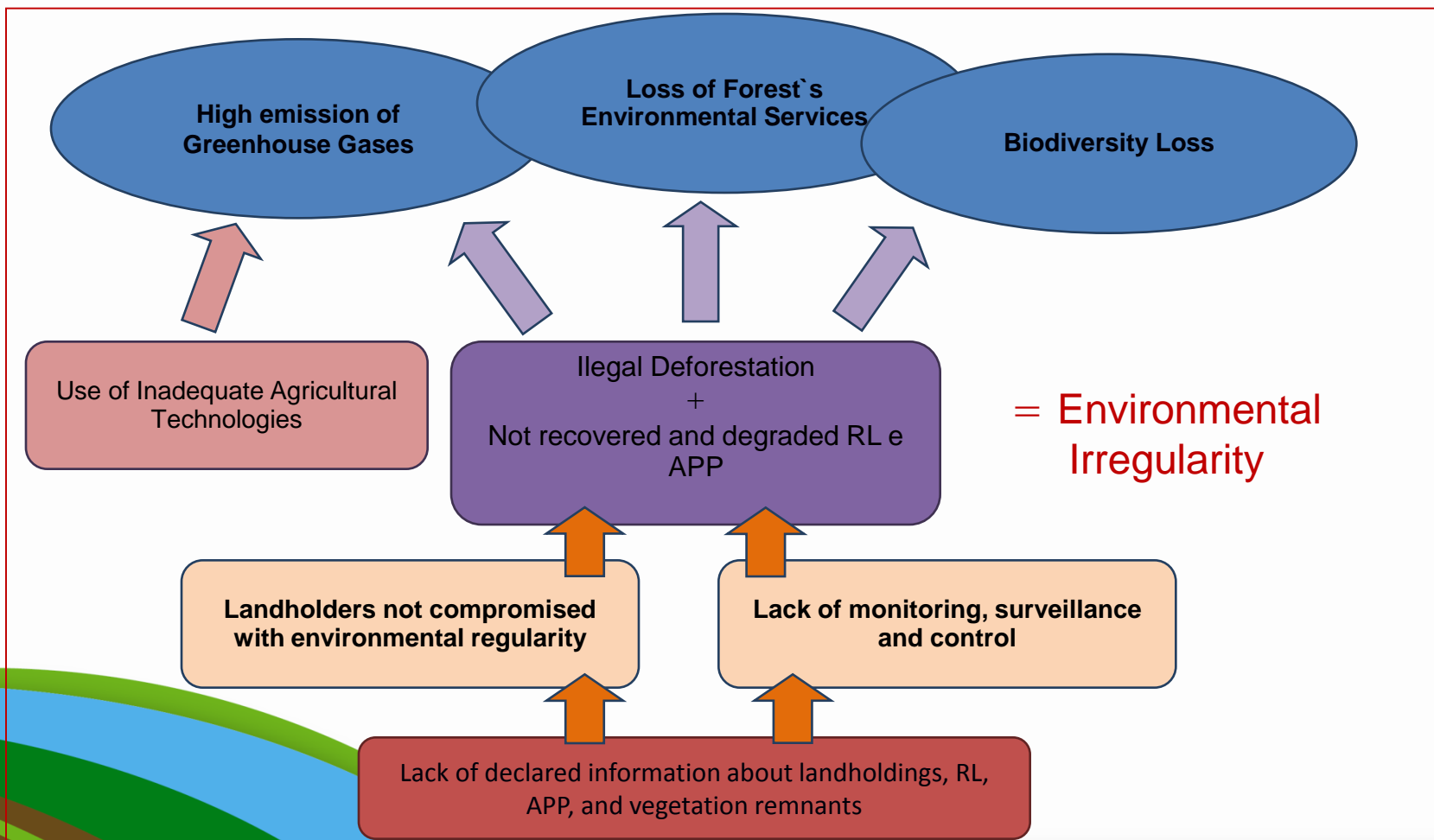




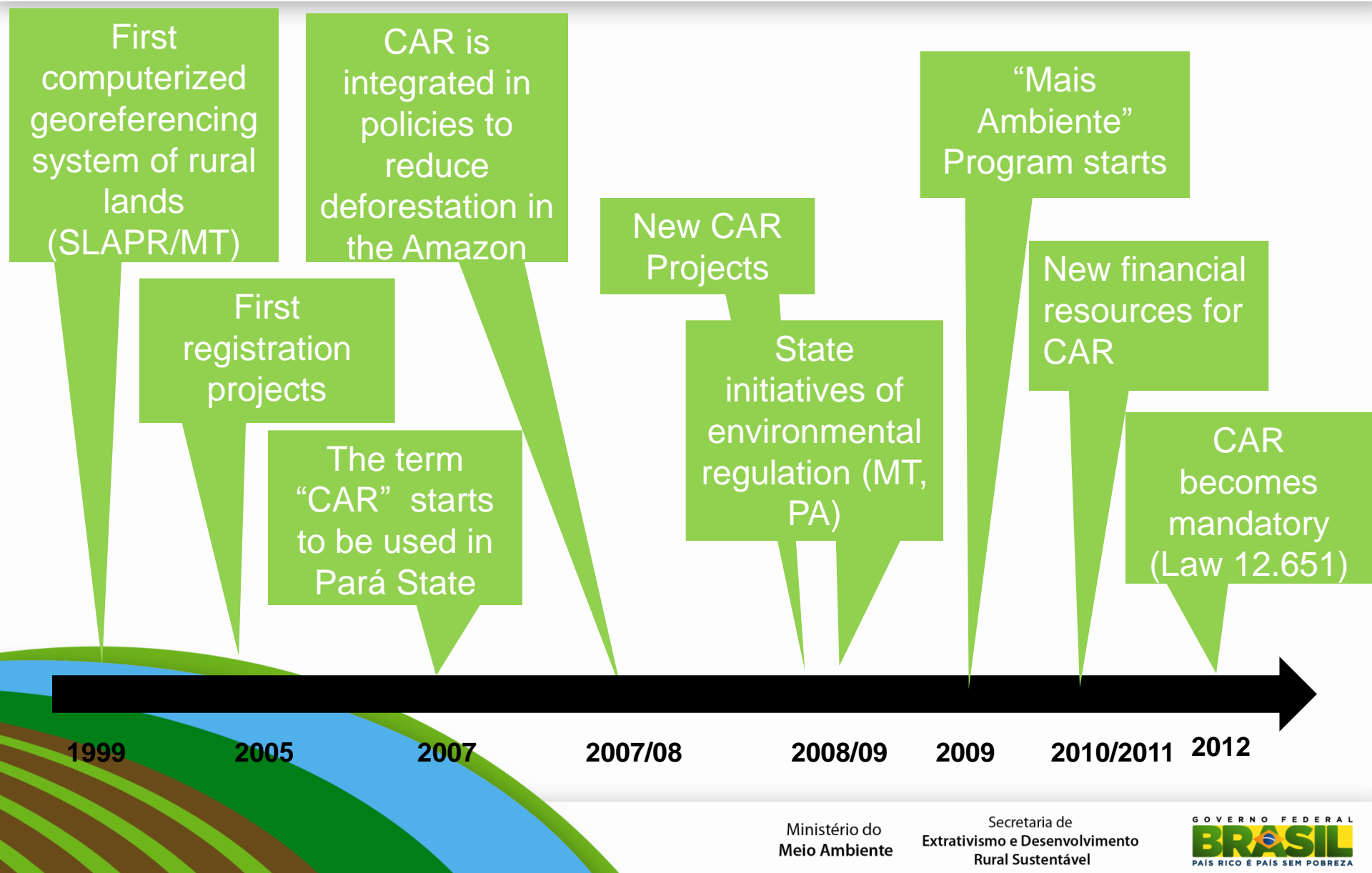
**Environmental Regularization of Rural Lands in the
Cerrado Biome
CAR-FIP Project**

Brazilian Investment Plan
Forest Investment Program (FIP)
Climate Investment Funds (CIF)

“Problem Tree”



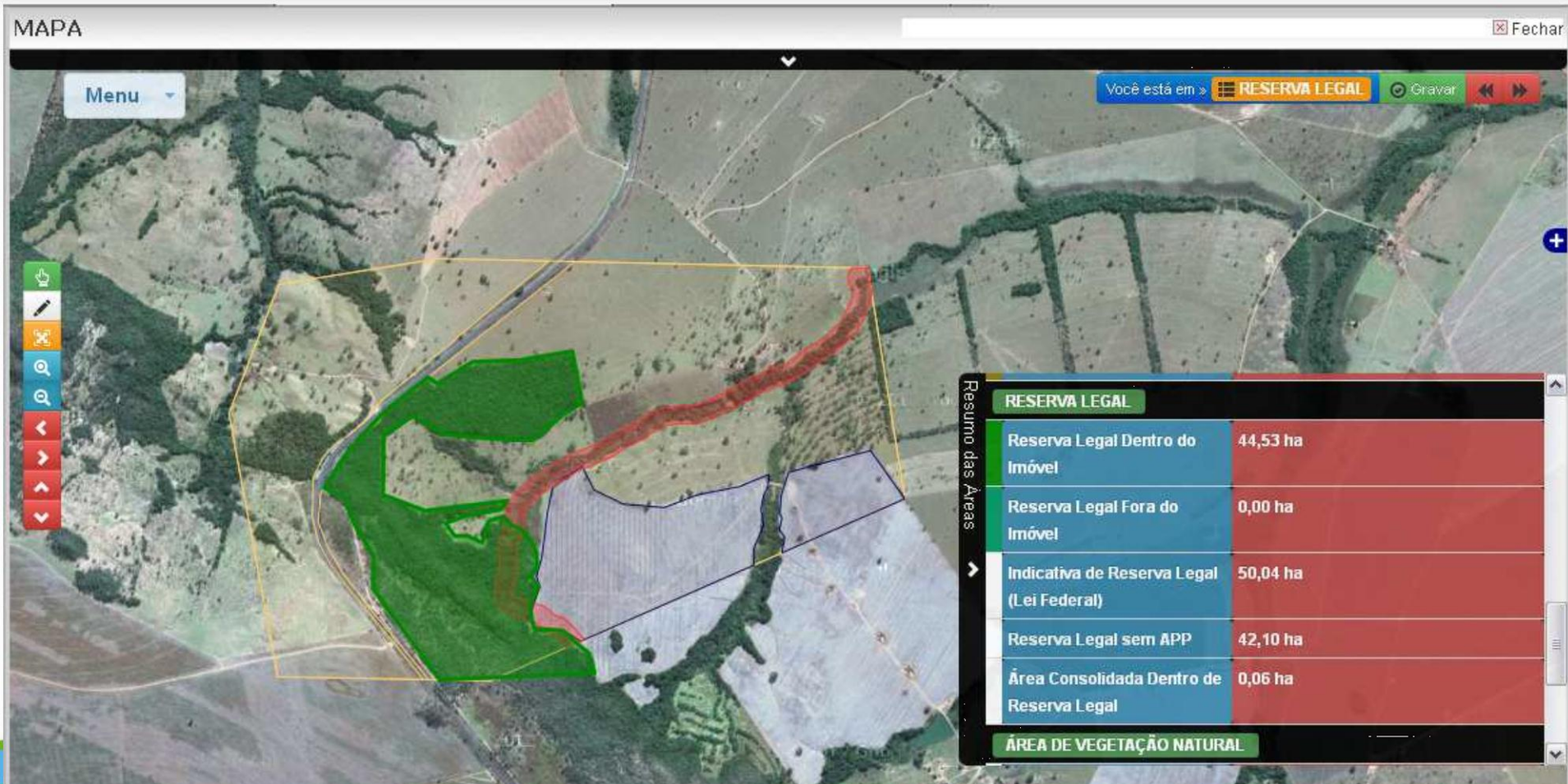
CAR Timeline



Concept

- National scale and mandatory public electronic register of rural landholdings, aimed at integrating information in a database for controlling, monitoring, environmental planning and deforestation combat (Law 12.651, art. 29 – Brazilian new Forest Code).





The CAR-Cerrado Project

- Financed with resources of FIP (Forest Investment Program) - 32,5 million dollars of a total of 70 million dollars that attends three other projects:
 - Support to the ABC plan;
 - Forestry Inventory;
 - Forest cover monitoring and forest fires prevention system.
- Brazilian Government Counterpart: 17,5 million dollars.

Brazilian Biomes



The Cerrado covers partially Bahia, Goiás, Maranhão, Mato Grosso, Mato Grosso do Sul, Minas Gerais, Paraná, Piauí, São Paulo and Tocantins, and totally the Federal District.

General Objective:

Contribute, together with other Governmental initiatives, to raise the environmental regularity of the Cerrado's rural landholdings (less deforestation, less degraded areas, more recovered areas).

In the strategic level, contribute with the reduction of GHG, the conservation of the forest's environmental services and its biodiversity.

Specific Objectives of the Project

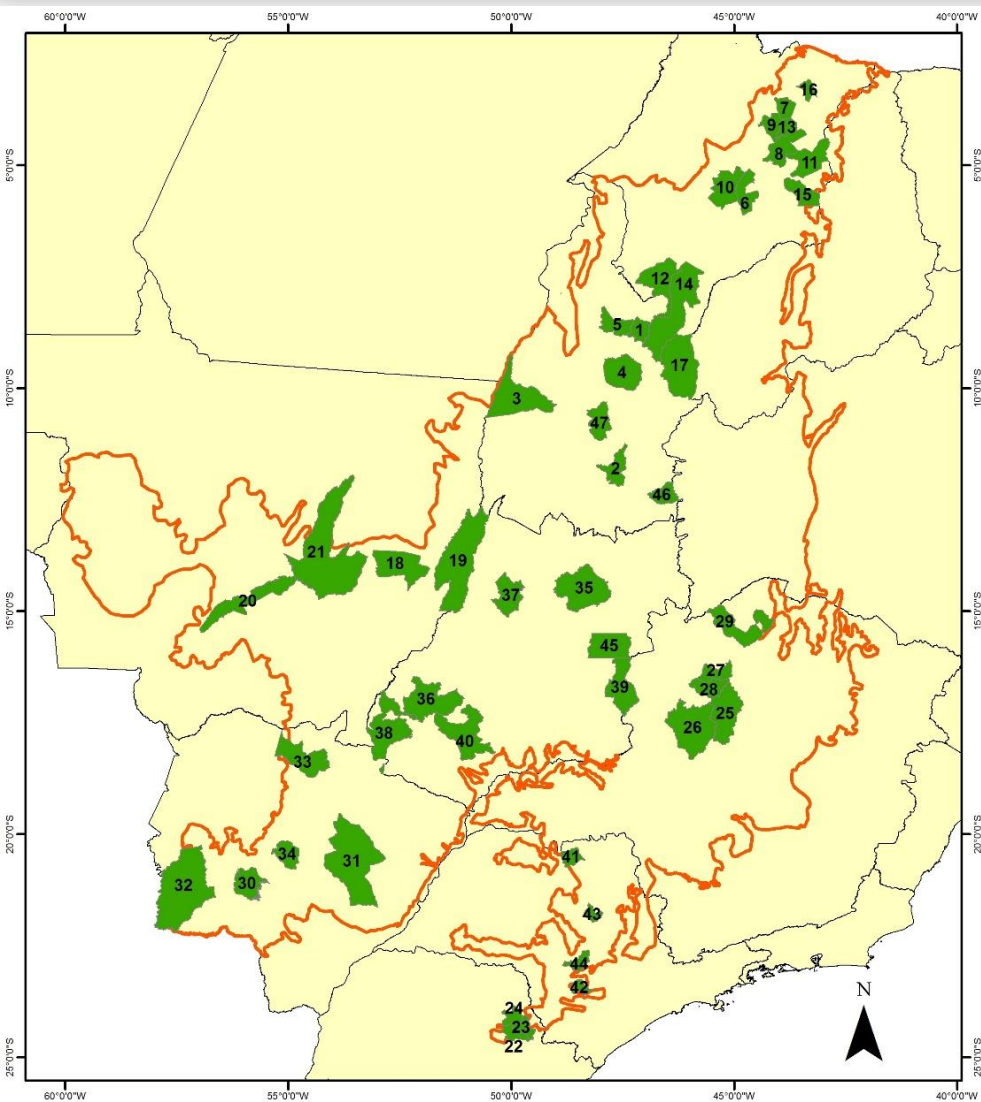
Enable the 9
selected states to
receive, analyse and
approve the CAR
registrations

70% of landholdings in
the priority
municipalities
registered in CAR

Beneficiaries and Stakeholders

- The main focus of the project are Landholders of the Cerrado, specially small farmers, traditional communities, indigenous people and land reform settlers.
- The state governments and their agencies.
- The local municipality governments.
- Federal Government agencies: Ministry of the Environment (MMA), Ministry of Agriculture (MAPA), Ministry of Agrarian Development (MDA), National Institute for Colonization and Land Reform (INCRA) and others.
- The farmer's syndicates, associations and other organizations.

FIP Municipalities- 47



Legenda

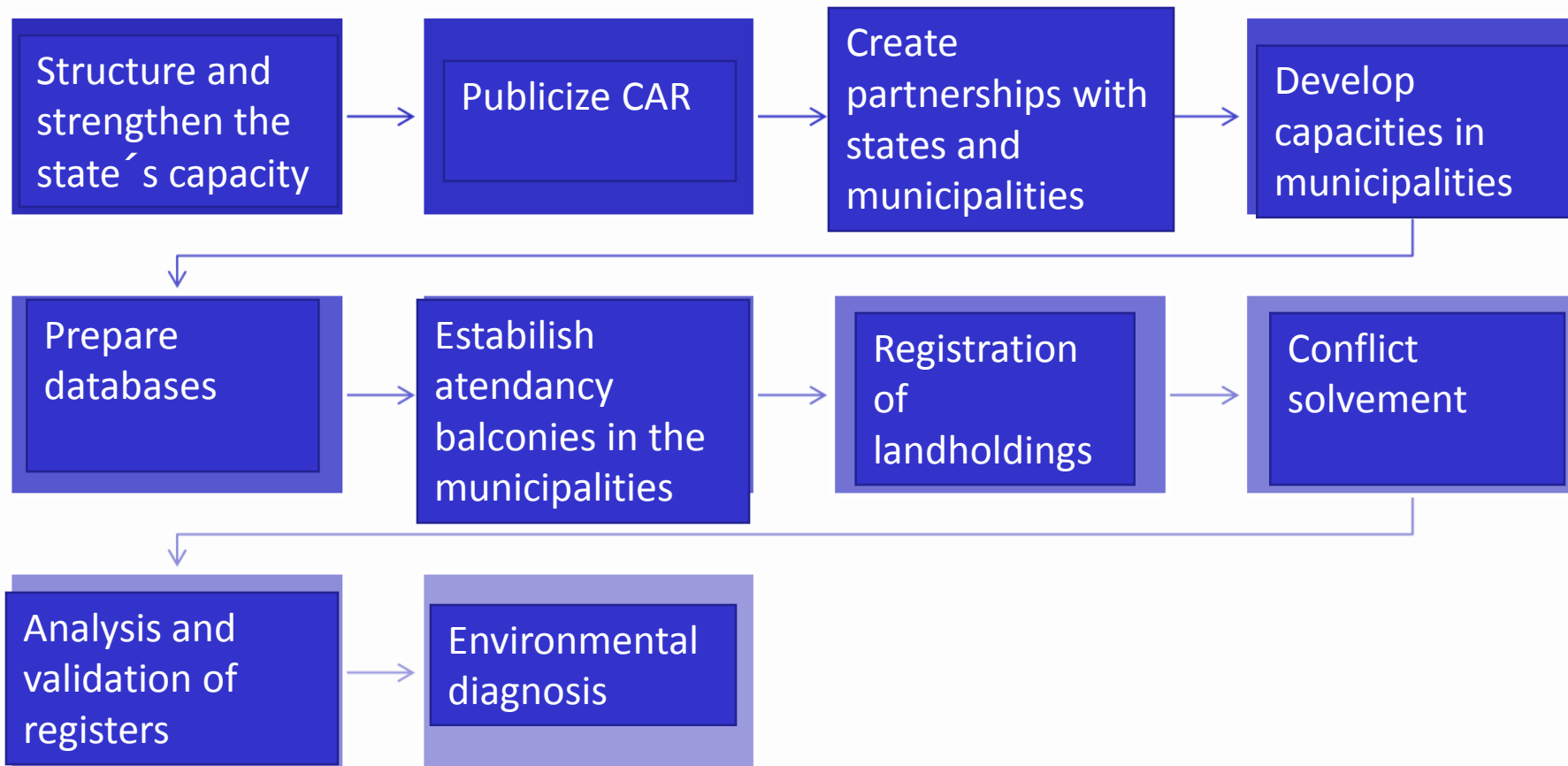
- Municípios FIP
- Bioma Cerrado
- Estados

- | | |
|----------------------------|------------------------|
| 1, TO, RECURSOLÂNDIA | 13, MA, TIMBIRAS |
| 2, TO, NATIVIDADE | 14, MA, BALSAS |
| 3, TO, PIUM | 15, MA, PARNARAMA |
| 4, TO, RIO SONO | 16, MA, URBANO SANTOS |
| 5, TO, ITACAJÁ | 17, MA, ALTO PARNAÍBA |
| 6, MA, TUNTUM | 18, MT, ÁGUA BOA |
| 7, MA, VARGEM GRANDE | 19, MT, COCALINHO |
| 8, MA, CODÓ | 20, MT, ROSÁRIO OESTE |
| 9, MA, COROATÁ | 21, MT, PARANATINGA |
| 10, MA, BARRA DO CORDA | 22, PR, PIRAÍ DO SUL |
| 11, MA, CAXIAS | 23, PR, JAGUARIAÍVA |
| 12, MA, RIACHÃO | 24, PR, ARAPOTI |
| 25, MG, BURITIZEIRO | 37, GO, CRIXÁS |
| 26, MG, JOÃO PINHEIRO | 38, GO, MINEIROS |
| 27, MG, SÃO ROMÃO | 39, GO, CRISTALINA |
| 28, MG, SANTA FÉ DE MINAS | 40, GO, RIO VERDE |
| 29, MG, JANUÁRIA | 41, SP, BARRETOS |
| 30, MS, NIOAQUE | 42, SP, ANGATUBA |
| 31, MS, RIBAS DO RIO PARDO | 43, SP, ARARAQUARA |
| 32, MS, PORTO MURTINHO | 44, SP, BOTUCATU |
| 33, MS, COXIM | 45, DF, BRASÍLIA |
| 34, MS, TERENOS | 46, TO, TAGUATINGA |
| 35, GO, NIQUELÂNDIA | 47, TO, MONTE DO CARMO |
| 36, GO, CAIAPÓIA | |

Components of the Project

- Implementation of the CAR system in the states (structuring and strengthening state capacity to implement CAR)
- CAR in priority municipalities (mobilization actions and registration support)
- Coordination and Project Management (management, monitoring and evaluation of the project's activities, goals and results)

Strategic Steps of CAR



Goals and Result Indicators

The Indicators of state capacity for the CAR will be qualitative:

- Relevant legislation, including laws, decrees, regulations and instructions.
- CAR State System installed and running, including user interface and integration with SICAR (the national system).
- Adequate infrastructure and support equipment installed.
- Human resources properly trained and working.
- Structures for technical assistance to landholders installed and running.

Goals and Result Indicators

The main indicators of registration in the priority municipalities are:

- The necessary databases (maps, satellite images, georeferenced land tenure...) organized and available to priority municipalities;
- Identification of all properties, registration and georeferencing of the perimeters of the properties of small farmers, indigenous peoples and traditional communities.
- Registration of 70% of the number of properties in each municipality;
- Registration of 60% of the area of landholdings with less than four fiscal modules (type A) in each priority municipality;
- Registration of 40% of the area of landholdings with more than four fiscal modules (type B) in each priority municipality;
- Analysis of 50% of the registrations received.

Goal - area and number of rural properties

FU	Goal number Type A	Goal area (hectares) Type A	Goal number Type B	Goal area (hectares) Type B	Goal number Total	Goal area (hectares) Total
DF	11.967	6.520	1.938	96.181	13.905	102.701
GO	5.209	178.739	3.615	1.072.544	8.824	1.251.283
MA	23.398	320.404	2.561	641.208	25.959	961.612
MG	3.247	118.175	1.655	457.985	4.902	576.160
MS	3.802	96.977	1.432	1.579.105	5.234	1.676.082
MT	1.912	75.722	761	1.247.414	2.673	1.323.136
PR	1.725	17.852	316	96.304	2.041	114.156
SP	2.886	19.438	631	114.615	3.517	134.053
TO	2.289	135.913	726	604.744	3.015	740.657
Total	56.435	969.740	13.635	5.910.100	70.070	6.879.840

Total number of rural properties in biome: circa 1,06 million (830.000 type A, 230.000 type B)

Total area of rural properties: circa 147.800.000 (21.800.000 ha type A, 125.000.000 type B)

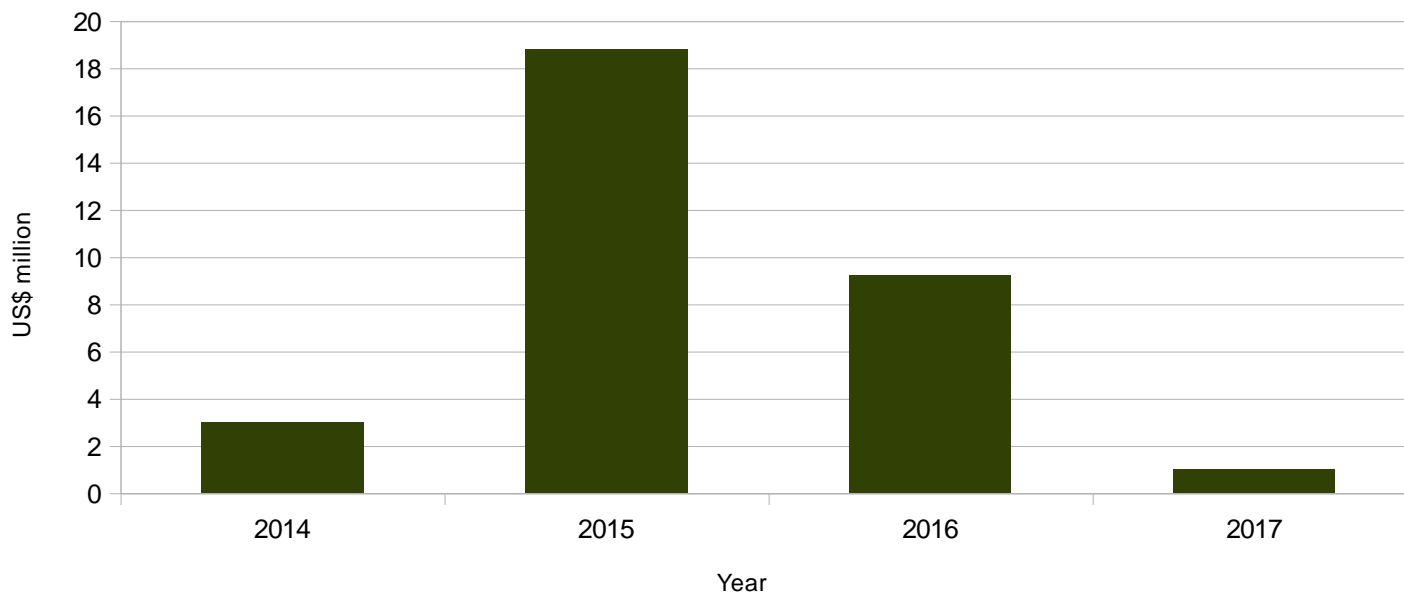
Estimation of the Resource Use

COMPONENTS	Value (R\$ millions)									MMA	Total Value (R\$ milhões)	%
	States											
	DF	GO	MA	MG	MS	MT	PR	SP	TO			
1 – Install the CAR system in the states	1,45	1,69	1,70	4,48	3,89	0,24	0,15	0,85	1,61	-	16,05	24,73%
2 - Registration in the priority municipalities	5,90	3,86	13,11	4,11	2,57	1,99	1,16	1,50	2,13	4,10	40,45	62,34%
3 – Project management	-	-	-	-	-	-	-	-	-	8,38	8,38	12,92%
TOTAL	7,35	5,55	14,81	8,59	6,46	2,23	1,31	2,35	3,74	12,48	65	100,00%
%	11,32%	8,55%	22,83%	13,24%	9,95%	3,44%	2,02%	3,63%	5,77%	19,24%	100,00%	

Investment Schedule - Estimate

FIP - Investment schedule (estimate)

US\$ million/year



year	US\$ million
2014	3
2015	18.8
2016	9.2
2017	1

Estimated execution period: from January 2014 to December 2017

Support for CAR Cerrado - Other Sources

- United Kingdom (DEFRA): 3 municipalities in the State of Bahia and 6 in the State of Piauí.
- Resources of the Amazon Fund for the States of Maranhão and Tocantins already contracted.
- Resources of the Federal and State governments' budget.
- Creation of specific financial support in the Amazon Fund for the biome.

Project Formulation

- The project was planned and elaborated by means of 4 workshops, consultations and technical meetings with the states, applying participative methodology for the design and survey of demands of each federation unit, taking into account aspects such as technical and institutional capacity, infrastructure and logistics , and previously established criteria in the scope of the Forestry Investment Plan.
- Participative workshops were held with the participation of representatives of the various segments: small landowners, large-scale farmers, traditional communities, among others.

Project Management

- The Project will be implemented through a specific Project Management Unit, coordinated by the Secretariat of Sustainable Rural Development and Extractivism of MMA, that will articulate the execution of all actions, along with the states, municipalities and other stakeholders.
- A Special Bidding Commission will be created within MMA for the acquisition of products and services of the Project.

Thank You!

Brazilian Ministry of the Environment
www.mma.gov.br